



312 Plum Street, Suite 700  
Cincinnati, OH 45202  
(513) 381-2112

June 5, 2025

## **ADDENDUM 2**

TO THE DRAWINGS, SPECIFICATIONS AND CONTRACT DOCUMENTS FOR:

### **Falmouth Head Start Center**

**67 KLEE WAY,  
FALMOUTH, KY 41040**

**Comm. No. 2023108.01**

#### **TO ALL BIDDERS:**

This Addendum supplements, amends and takes precedence over the original Drawings and Specifications, and shall be taken into account when preparing proposals, and shall become part of the Contract Documents. Receipt of this Addendum must be entered on the bidder's Bid Form. Bidder is cautioned to read the entire addendum and to check that all pages of the Addendum have been included in the Bidder's copy of the Addendum.

---

#### **DRAWINGS**

##### **ITEM 1 – S101:**

Footing elevations have been modified to accommodate civil grading plan.

##### **ITEM 2 – S201:**

Additional header designations have been added for windows not specified in permit issuance. Corrections made to skylight coordination note.

##### **ITEM 3 – S301:**

Anchorage for "TYPICAL SHEAR WALL DETAIL" has been modified to be 5/8" threaded rods cast into masonry stem walls. Truss hold downs have been modified to "Simpson H10A" instead of "Simpson H3".

**End of Addendum 2 items – See attachments.**

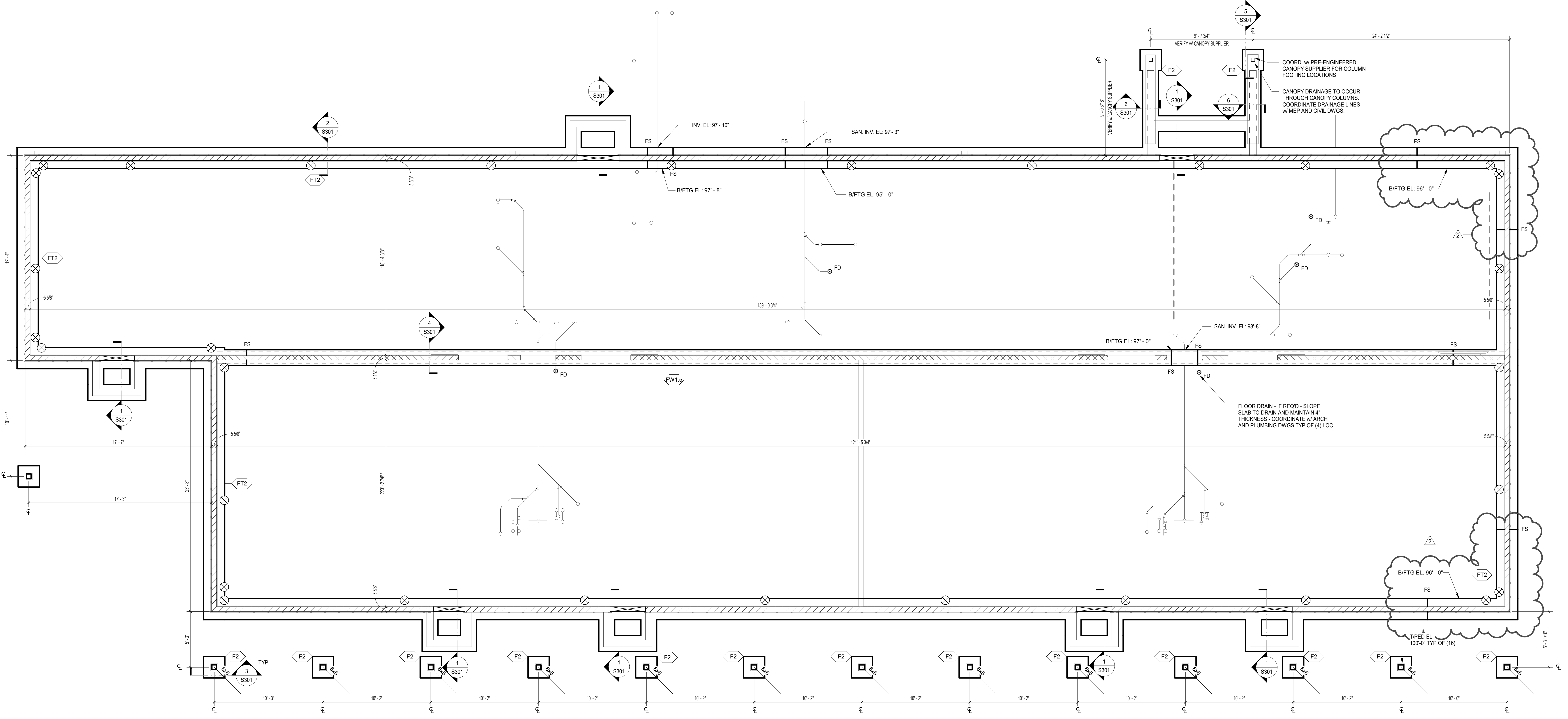
**ISSUANCES**

05-03-24	DESIGN DEVELOPMENT
05-14-25	PERMIT AND BID SET
2 06-05-25	ADDENDUM 2

**FOUNDATION PLAN**

COMM NO. 2023108.01

**S101**

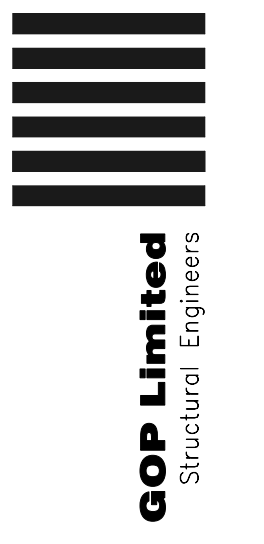


**1 FOUNDATION PLAN**  
S101 1/4" = 1'-0"

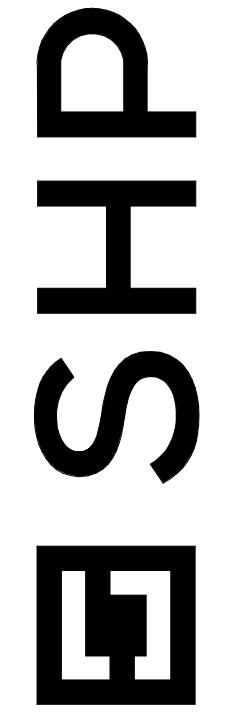
- SEE S000 FOR GENERAL FOUNDATION NOTES AND ADDITIONAL INFORMATION  
FOUNDATION NOTES: (APPLY TO THIS SHEET ONLY):
1. ALL EXTERIOR BOTTOM OF FOOTING (B/FTG EL.) TO BE 97'-0" (UNO).
  2. ALL INTERIOR BOTTOM OF FOOTING (B/FTG EL.) TO BE 98'-4" (UNO).
  2. - DENOTES 2x6 AT 24" c/c - SOUTHERN YELLOW PINE No. 1 - PROVIDE STUD AT EA. ROOF TRUSS
  3. - DENOTES 2x6 AT 16" c/c - SOUTHERN YELLOW PINE No. 1 - PROVIDE STUD AT EA. ROOF TRUSS
  4. ALL INTERIOR STUDS TO BE 2x4 AT 24" c/c - SOUTHERN YELLOW PINE - STUD GRADE (UNO).
  5. - DENOTES HOLD-DOWN LOCATIONS - SEE TYPICAL DETAIL ON S301

**FOOTING SCHEDULE**

Mark	Description	Reinforcing
F2	2' -0" x 2' -0" x 1' -8"	(2) #5 EA. WAY T&B MATS
FT1.5	1'-6" x 1'-8" x CONT.	(2) #5 CONT. T&B MATS
FT2	2' -0" x 1'-8" x CONT.	(2) #5 CONT. T&B MATS
FW1.5	1'-6" x 1'-0" x CONT.	(2) #5 CONT.



COPYRIGHT  
STUEB HAMMOND PALL, INC  
ALL RIGHTS RESERVED



312 PLUM STREET, SUITE 700  
CINCINNATI, OH 45202 - 513.381.2112

NKCAC  
**FALMOUTH HEAD START CENTER**  
KLEE WAY, FALMOUTH, KY 41040  
**NORTHERN KENTUCKY COMMUNITY ACTION COMMISSION**  
717 MADISON AVENUE, COVINGTON, KY 41011

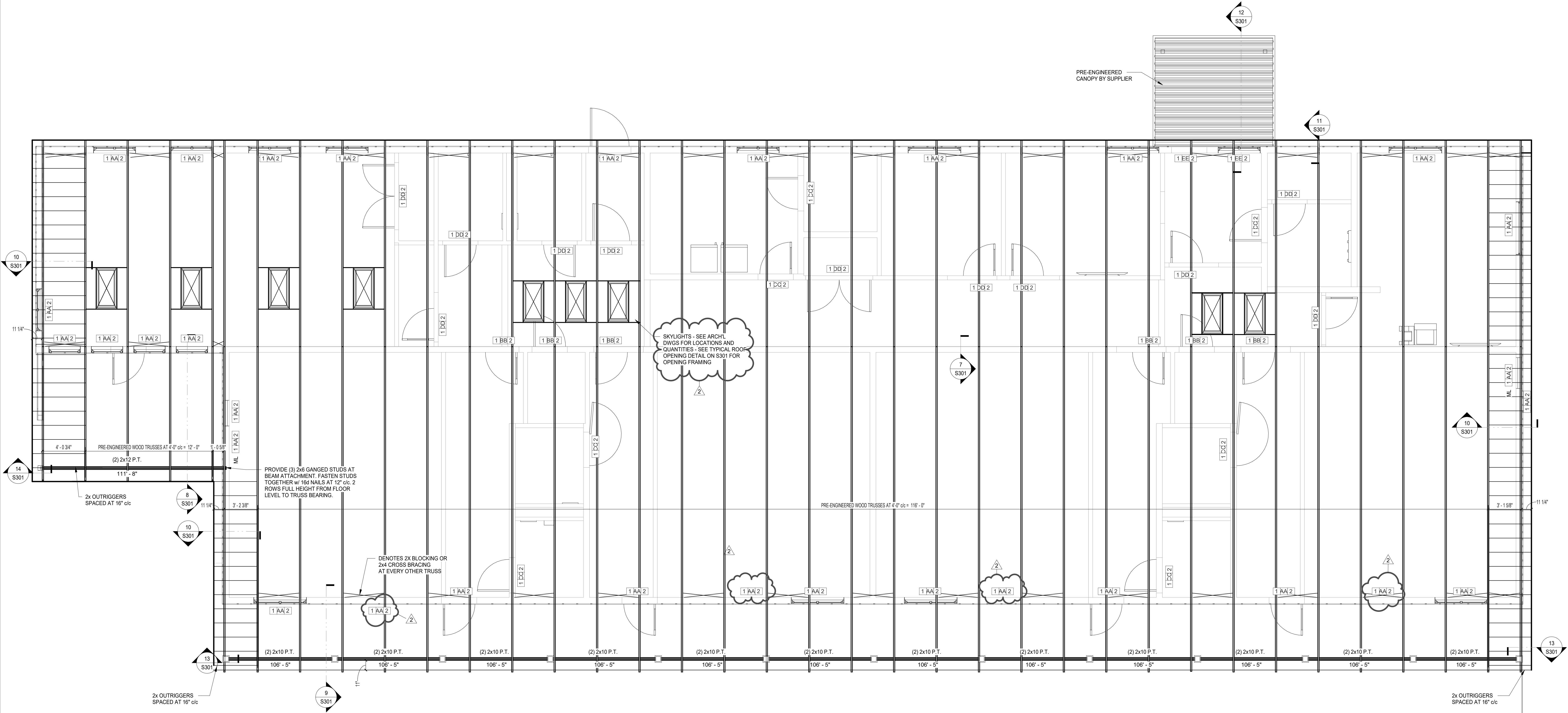
ISSUANCES

05-03-24	DESIGN DEVELOPMENT
05-14-25	PERMIT AND BID SET
06-05-25	ADDENDUM 2

ROOF FRAMING PLAN

COMM NO. 2023108.01

S201

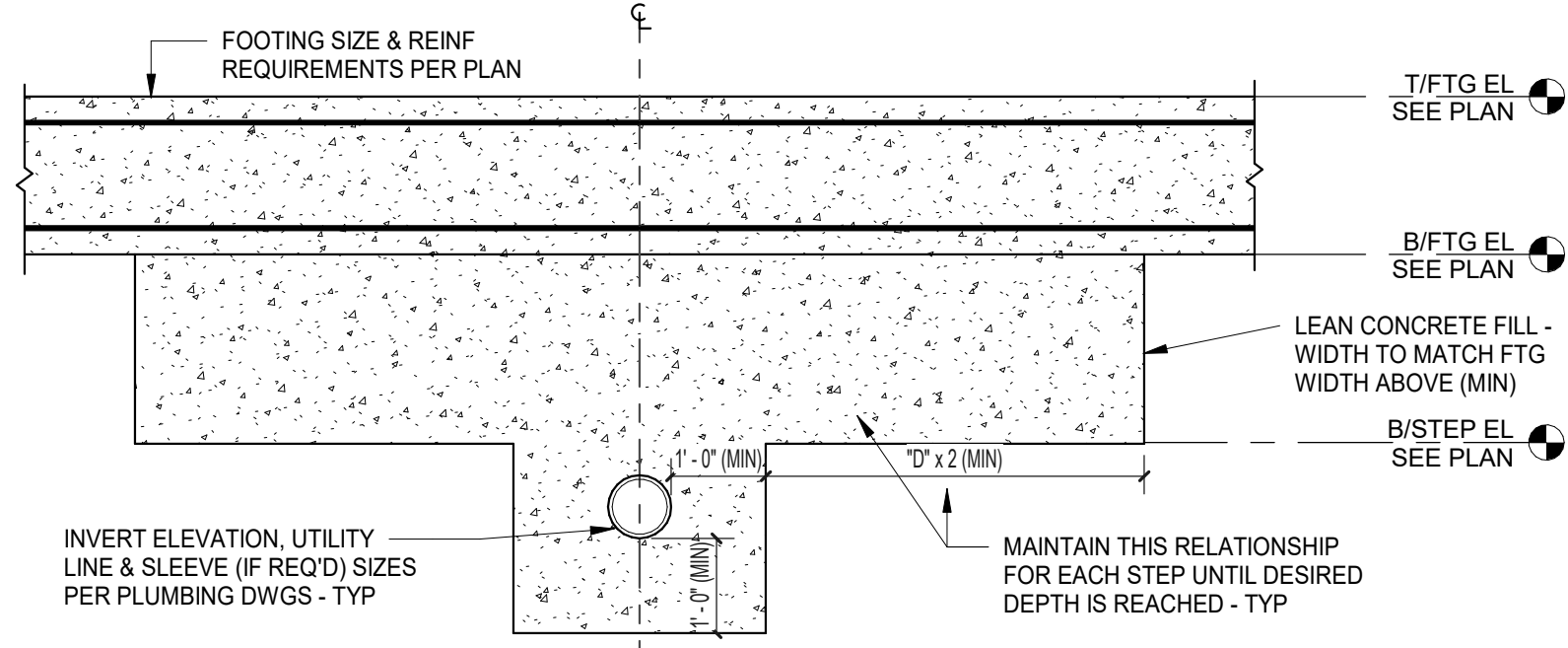


**ROOF FRAMING PLAN**

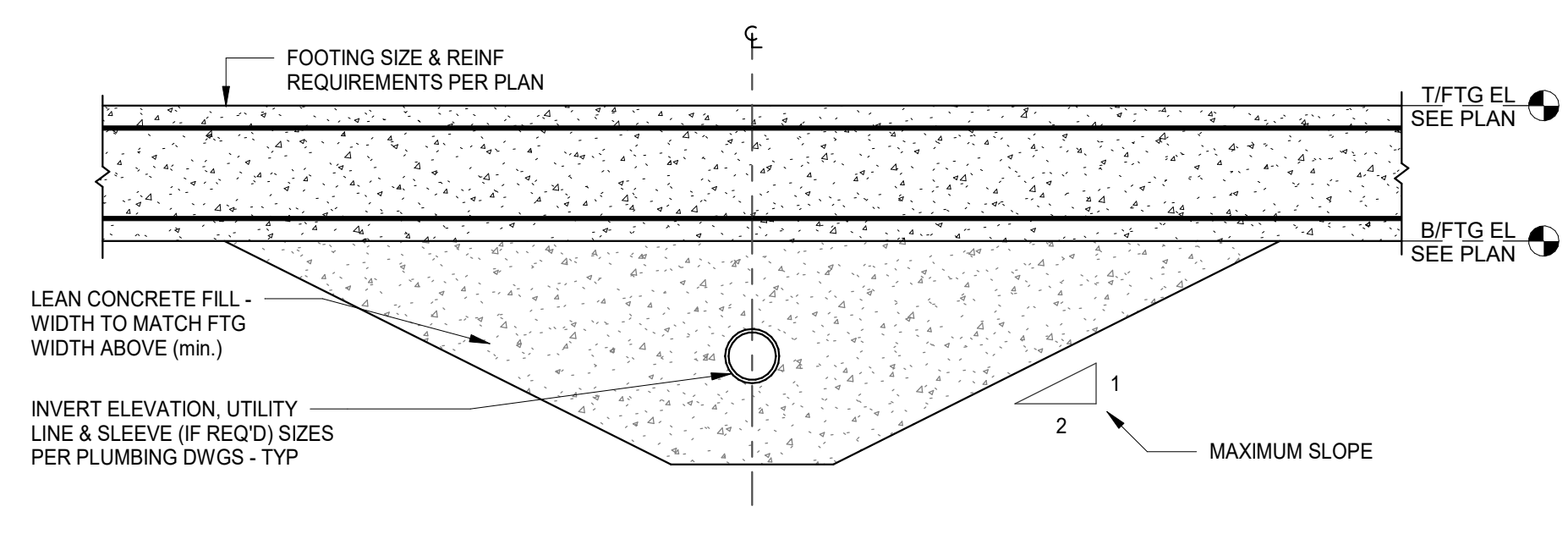
1/4" = 1'-0"

SEE S000 FOR GENERAL ROOF FRAMING NOTES AND ADDITIONAL INFORMATION.  
ROOF FRAMING NOTES: (APPLY TO THIS SHEET ONLY):

1. TYPICAL TRUSS BRG. EL. = 108'-0" (UNO).
2. HEADERS 'X' 'X' 'X' SHOWN THIS PLAN OCCUR AT OPENING BELOW.
3. COORDINATE HEADER ELEVATIONS WITH ARCHITECTURAL DRAWINGS (TYPICAL).
4. COORDINATE PLUMBING VENTS, DUCTWORK, PIPES, AND WATERLINES w/ TRUSS FRAMING.
5. SEE S101 FOR WALL STUD DESIGNATIONS.
6. SUPPLY 2x6 FRAMING BETWEEN TRUSSES AT 2'-0" C/C MAX - SEE SECTION 9' S301



**STEP FOOTING DETAIL**  
('Stepped' Lean-crete option)  
SCALE: 1/2" = 1' - 0"

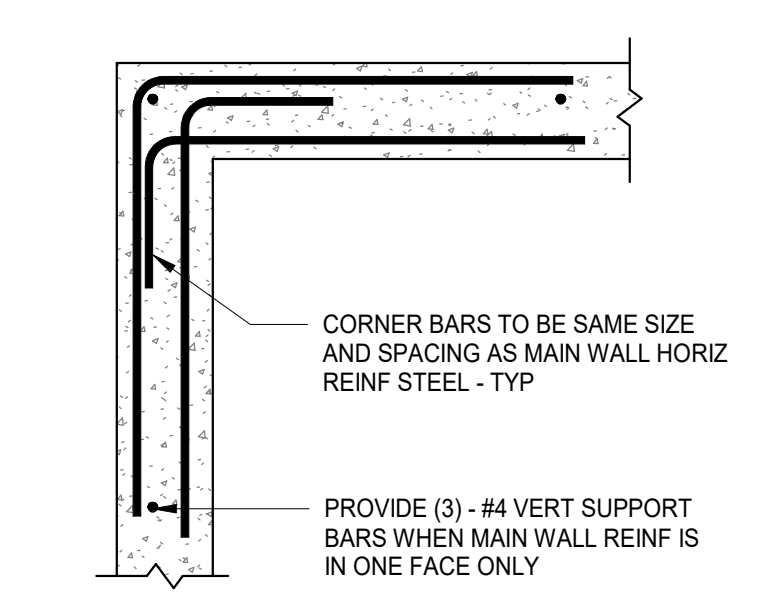


**STEP FOOTING DETAIL**  
('Sloped' Lean-crete option)  
SCALE: 1/2" = 1' - 0"

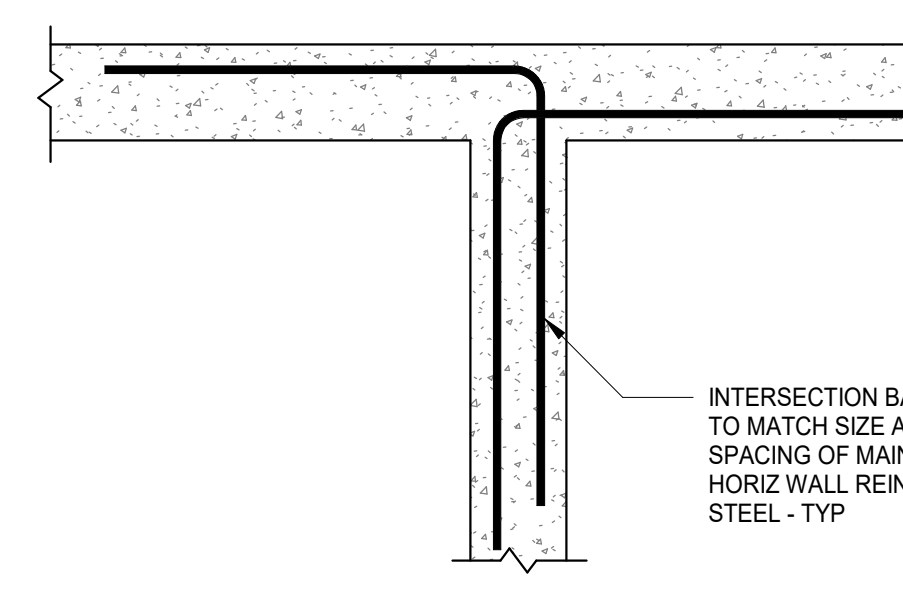
**RELATION OF UTILITY TRENCH TO BUILDING FOUNDATIONS**  
SCALE: 3/8" = 1' - 0"

**RELATION OF UTILITY TRENCH PARALLEL TO FOUNDATIONS (LEAN CONCRETE FILL OPTION)**  
SCALE: 3/8" = 1' - 0"

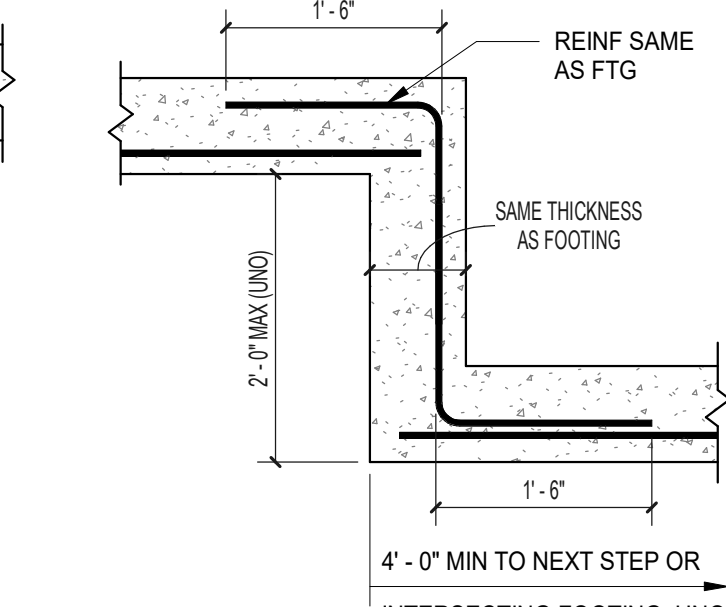
**TYPICAL DROP FOOTING AT UTILITY LINE**  
SCALE: 3/4" = 1' - 0"



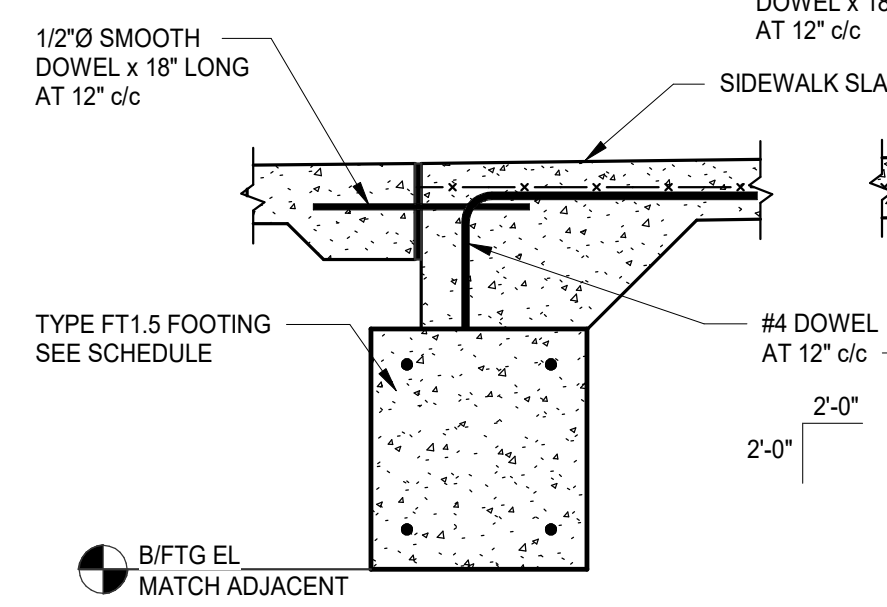
**TYPICAL CORNER (WALL, GB or FOOTING)**  
SCALE: 3/4" = 1' - 0"



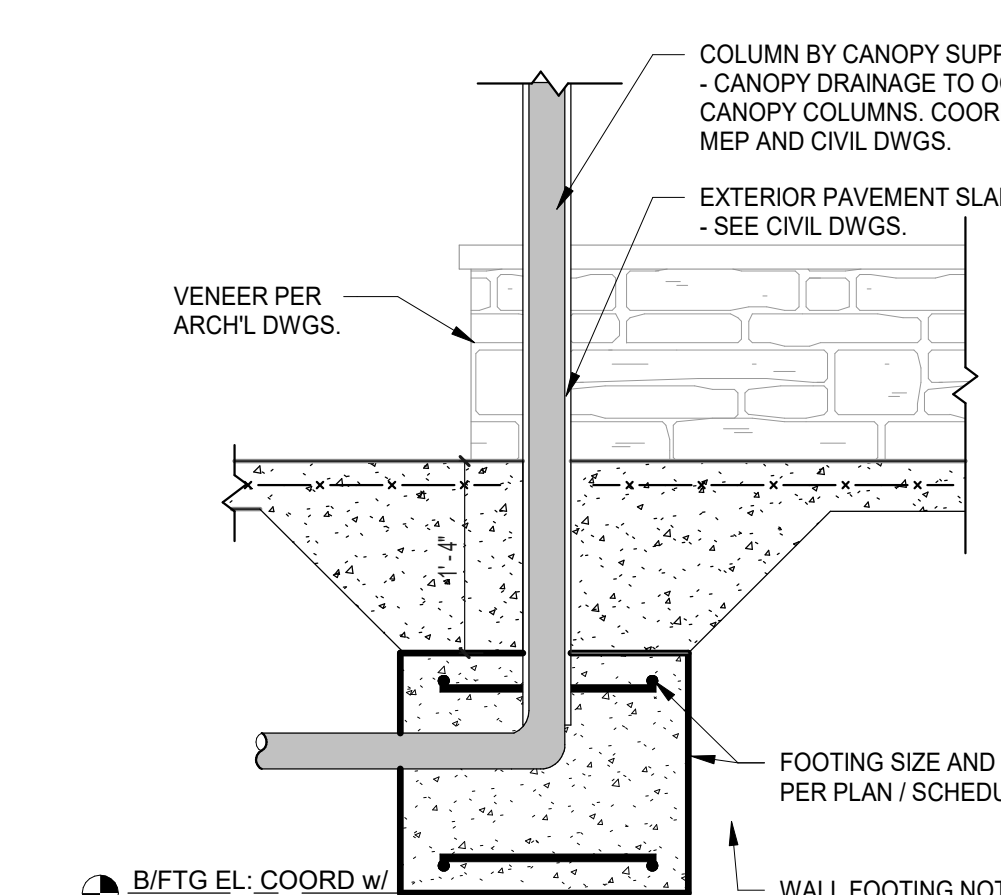
**TYPICAL INTERSECTION (WALL, GB or FOOTING)**  
SCALE: 3/4" = 1' - 0"



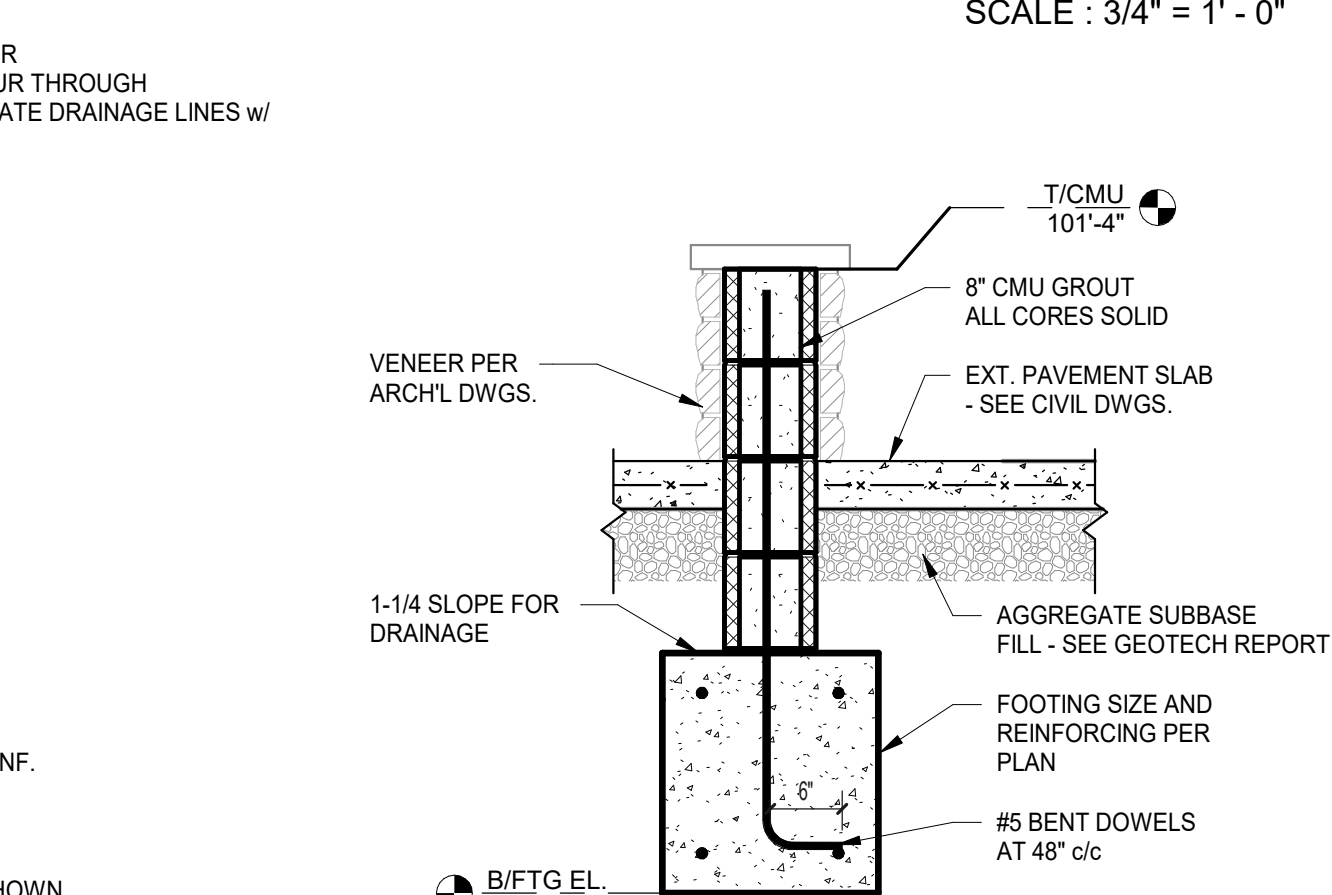
**TYPICAL STEP FOOTING DETAIL**  
SCALE: 3/4" = 1' - 0"



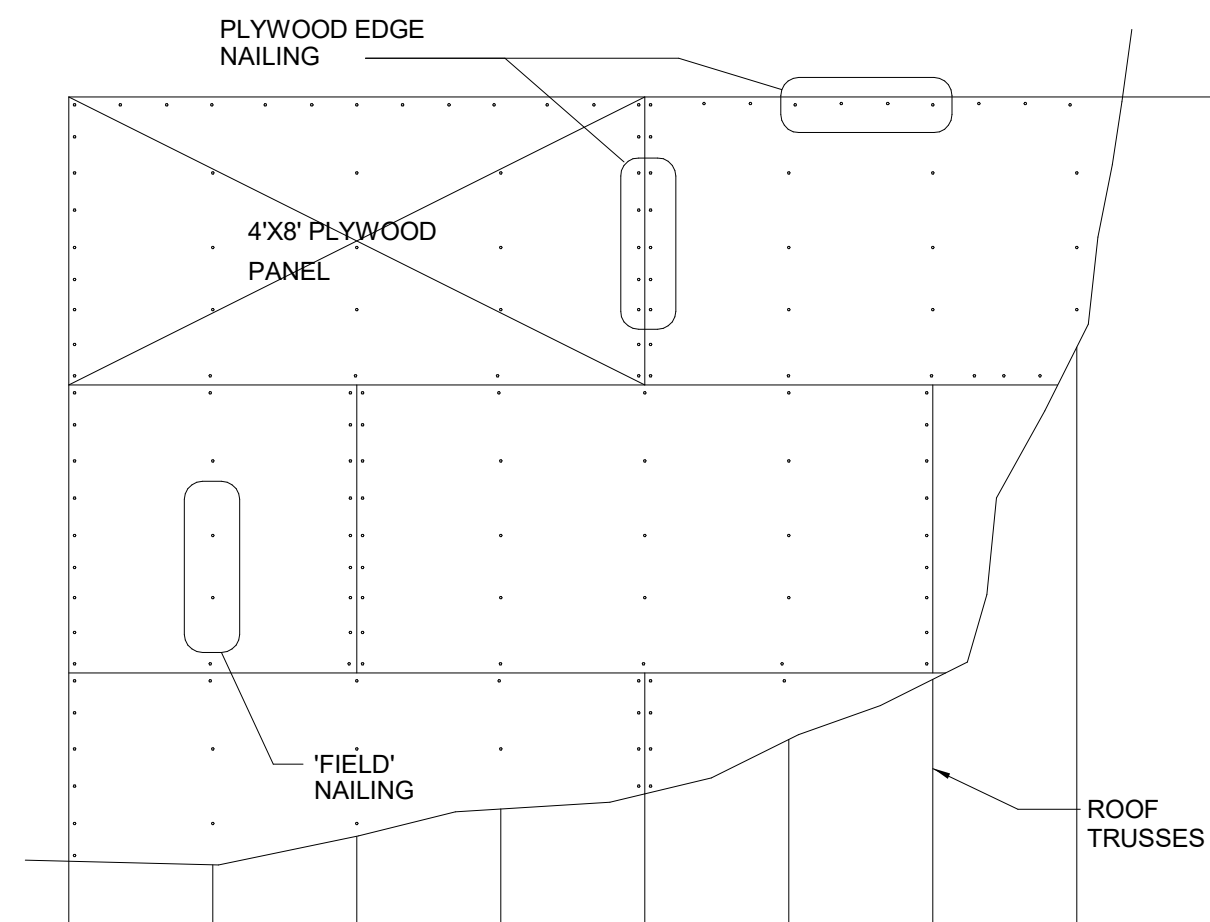
**TYPICAL FROST WALL FOOTING**  
SCALE: 3/4" = 1' - 0"



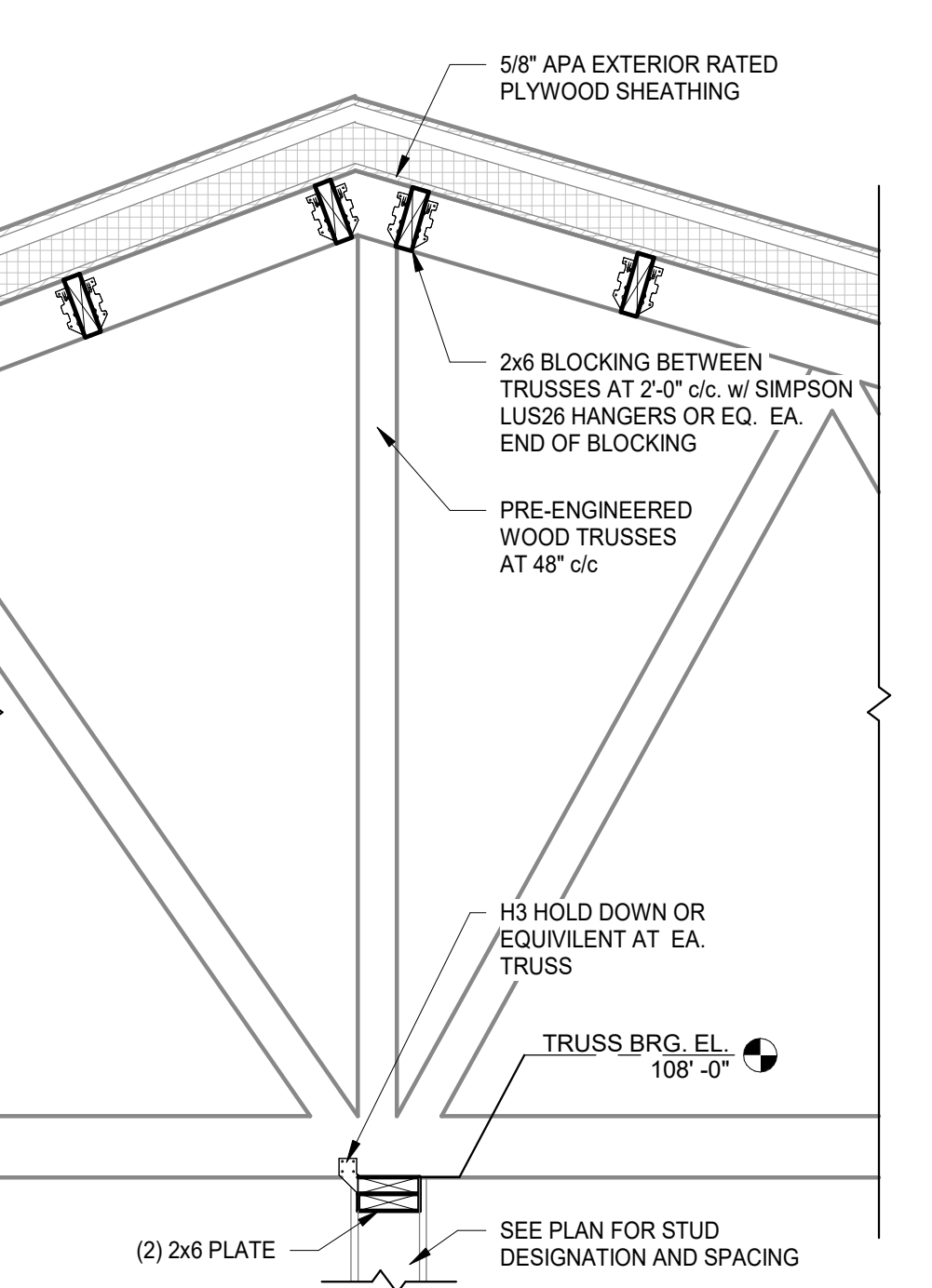
**5 SECTION**  
S301 3/4" = 1'-0"



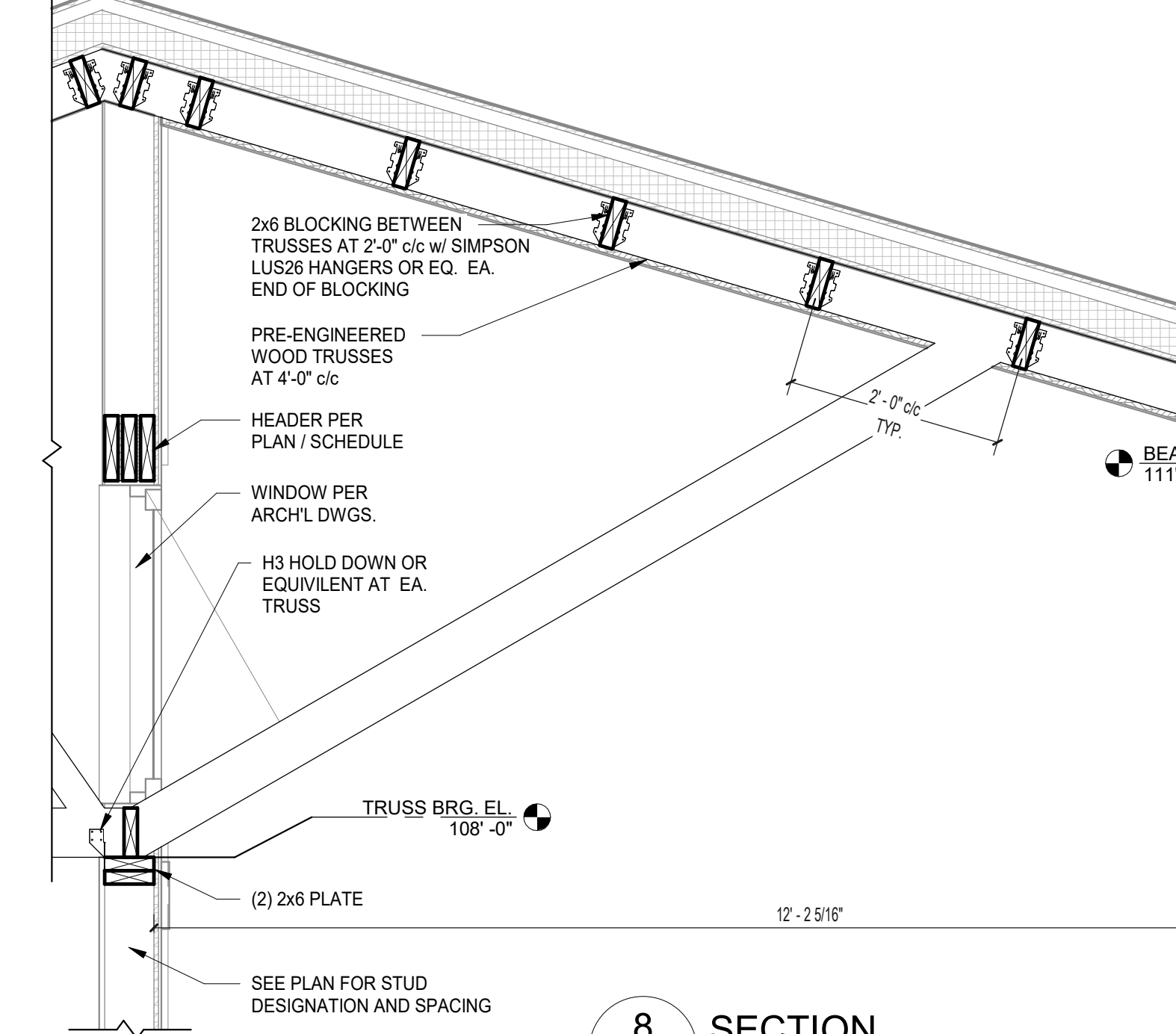
**6 SECTION**  
S301 3/4" = 1'-0"



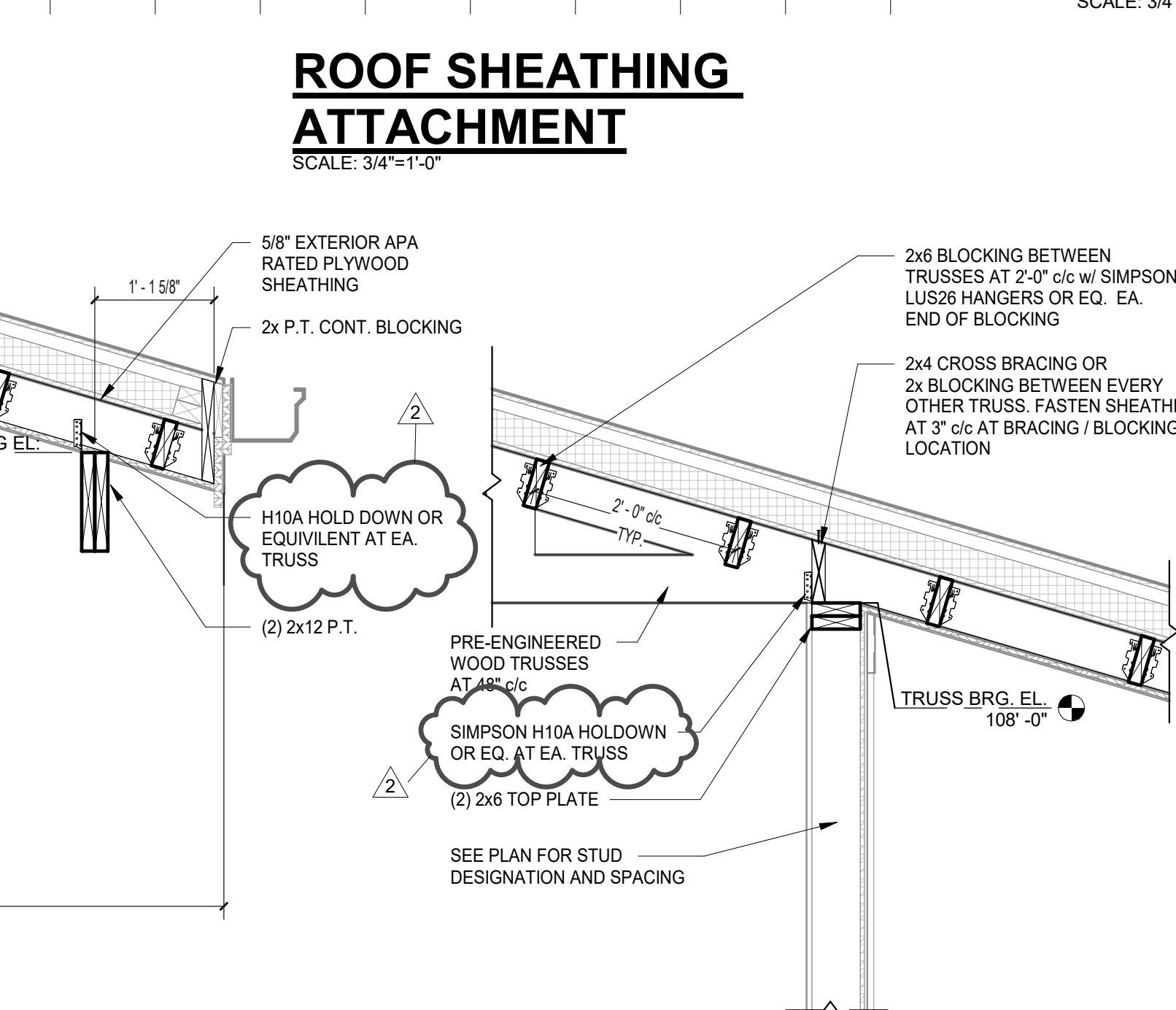
**WOOD ROOF OPENING DETAIL**  
SCALE: 3/4" = 1' - 0"



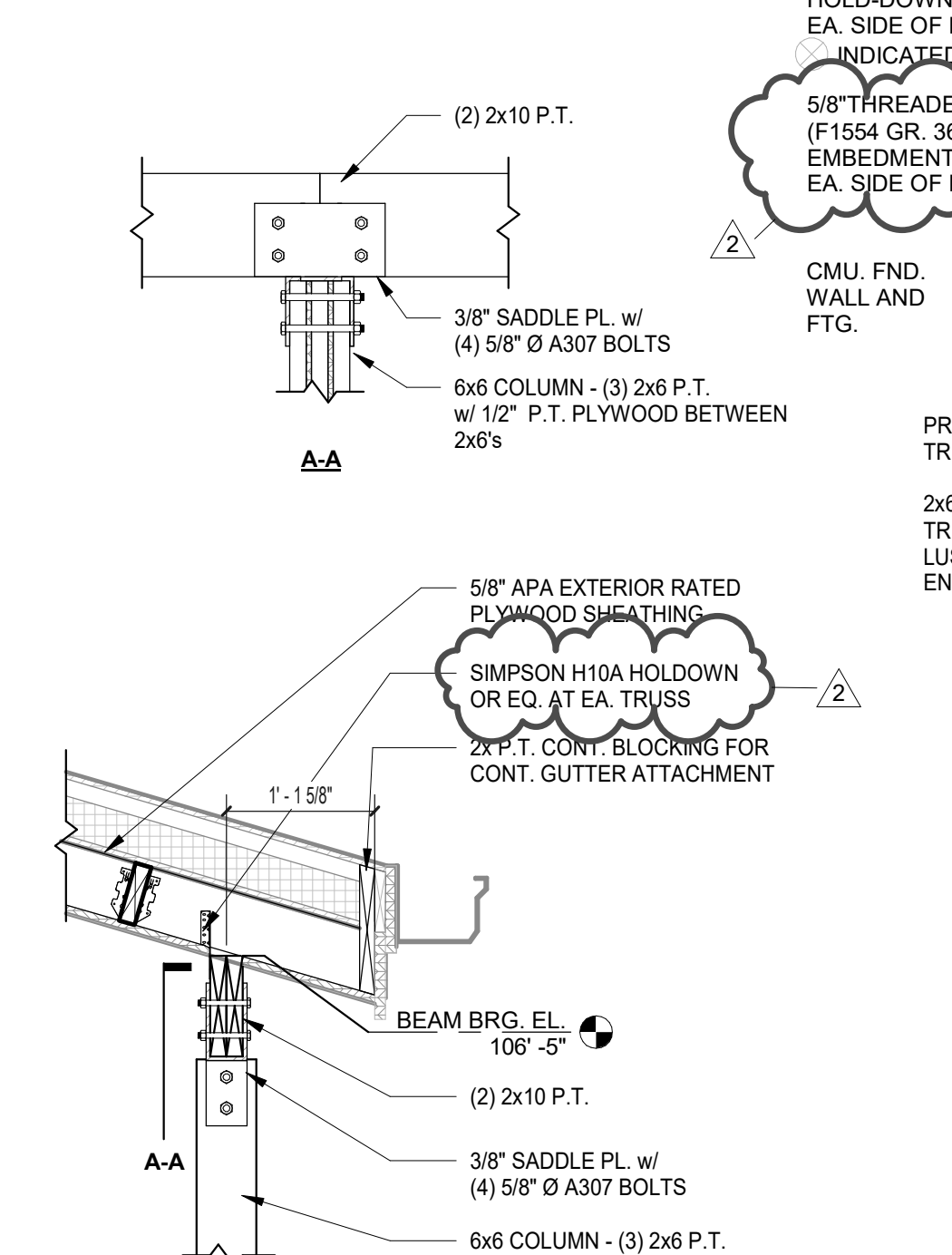
**7 SECTION**  
S301 3/4" = 1'-0"



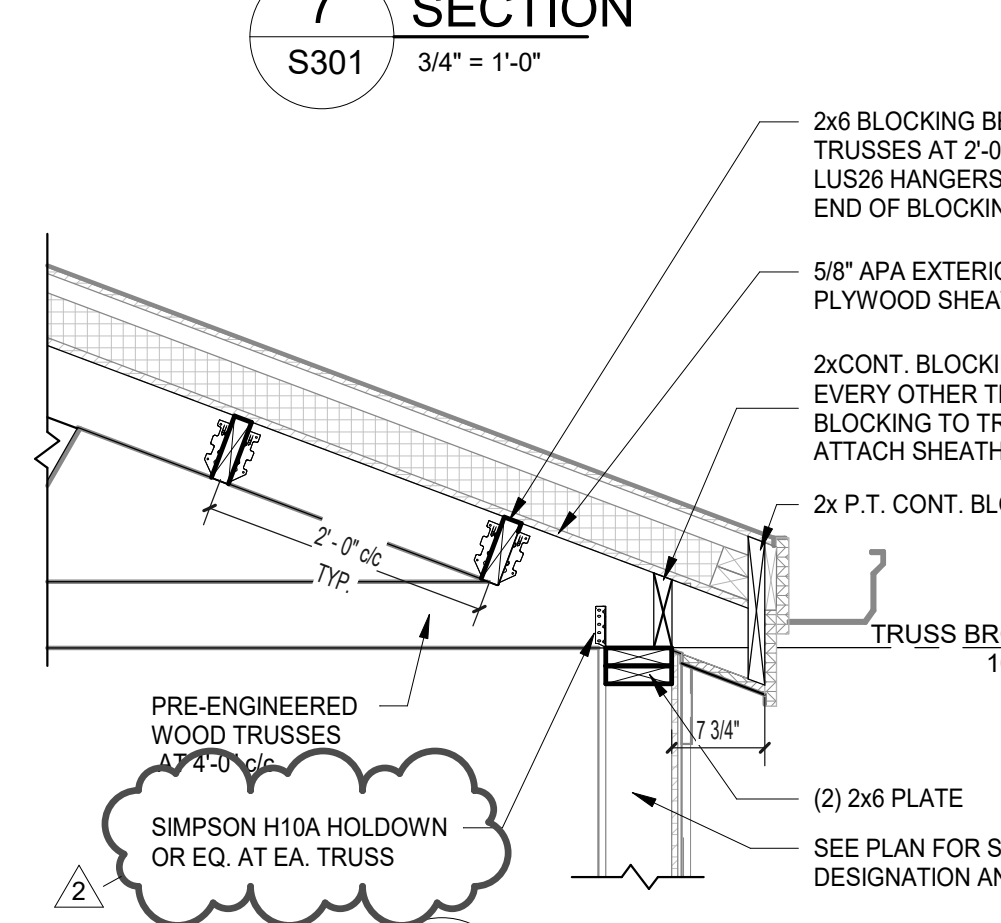
**8 SECTION**  
S301 3/4" = 1'-0"



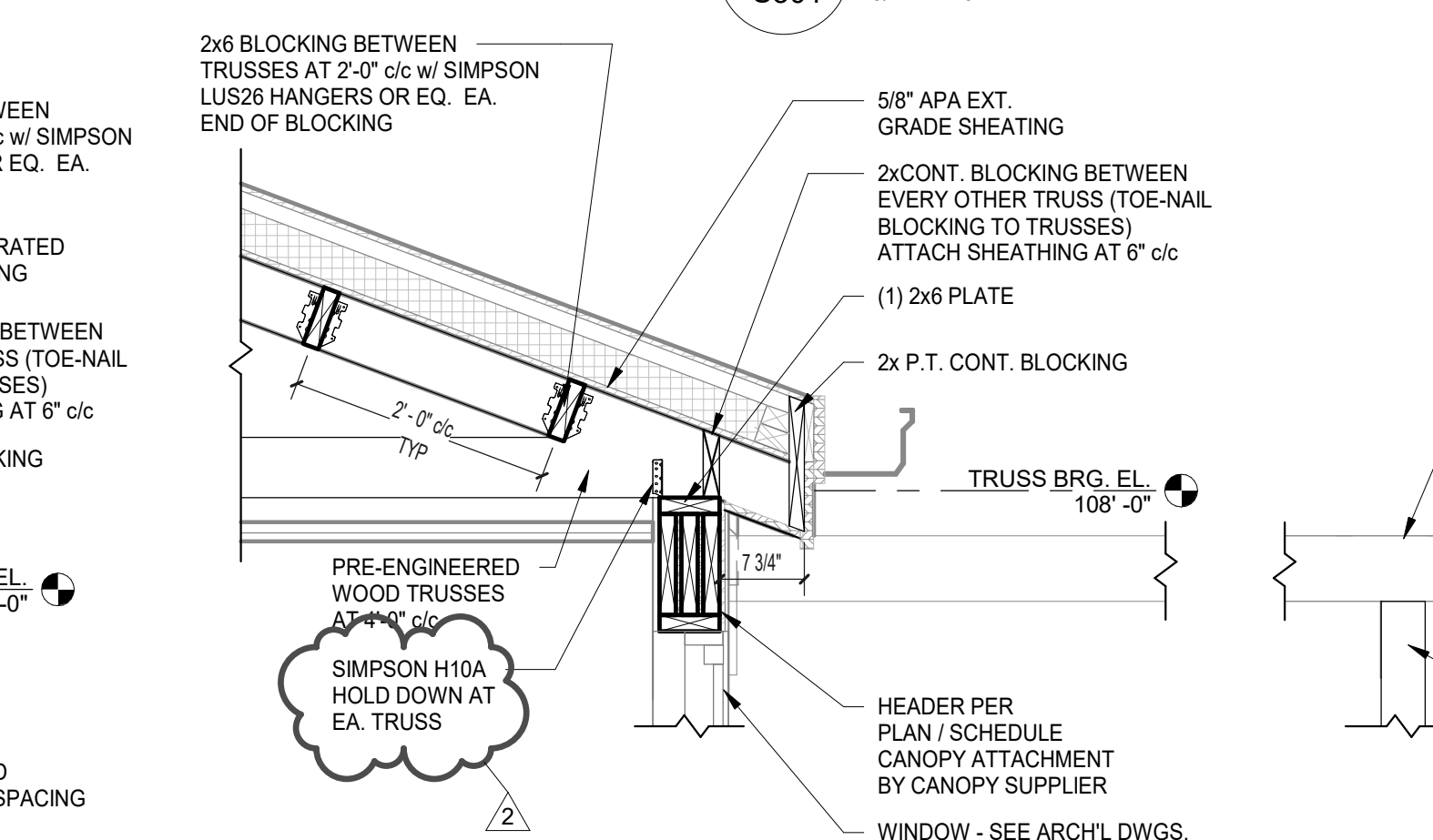
**9 SECTION**  
S301 3/4" = 1'-0"



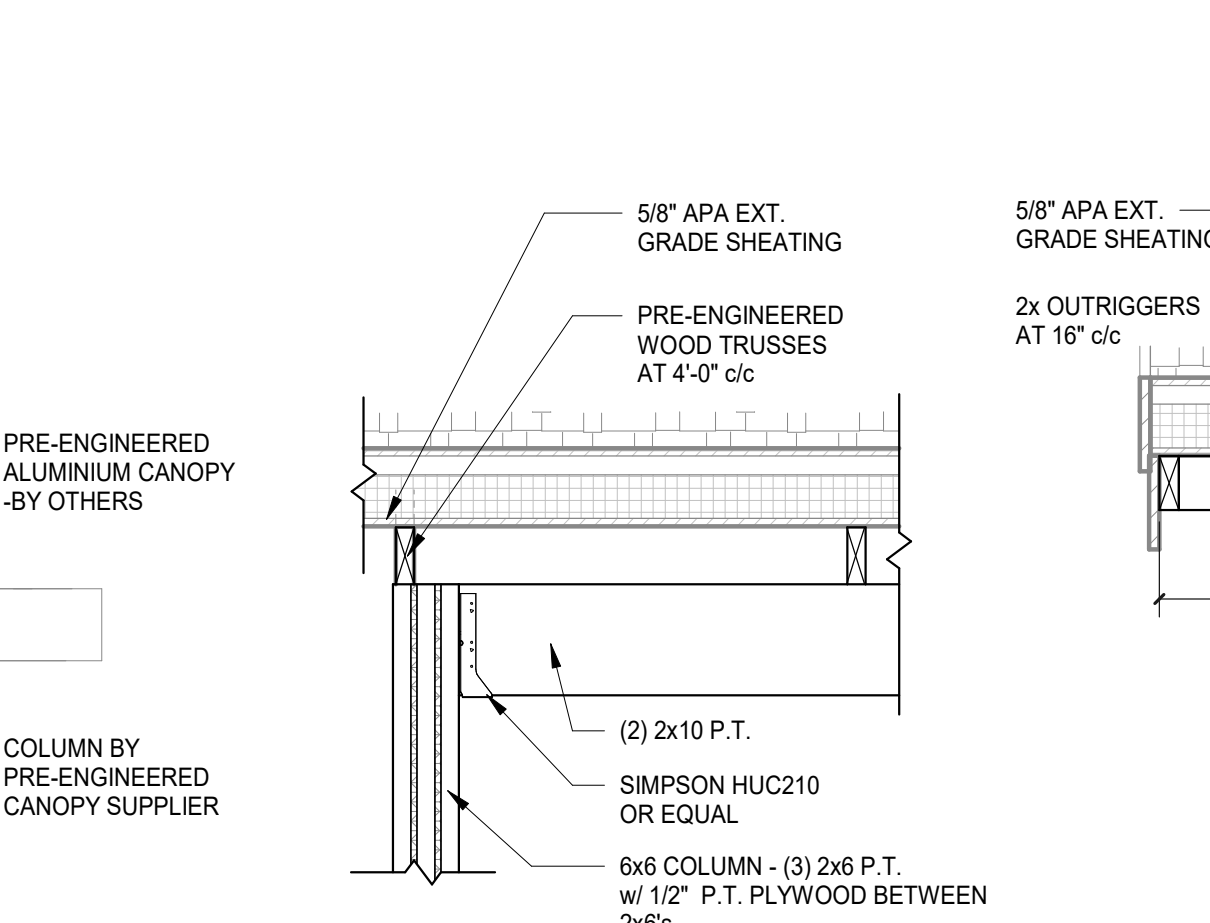
**10 SECTION**  
S301 3/4" = 1'-0"



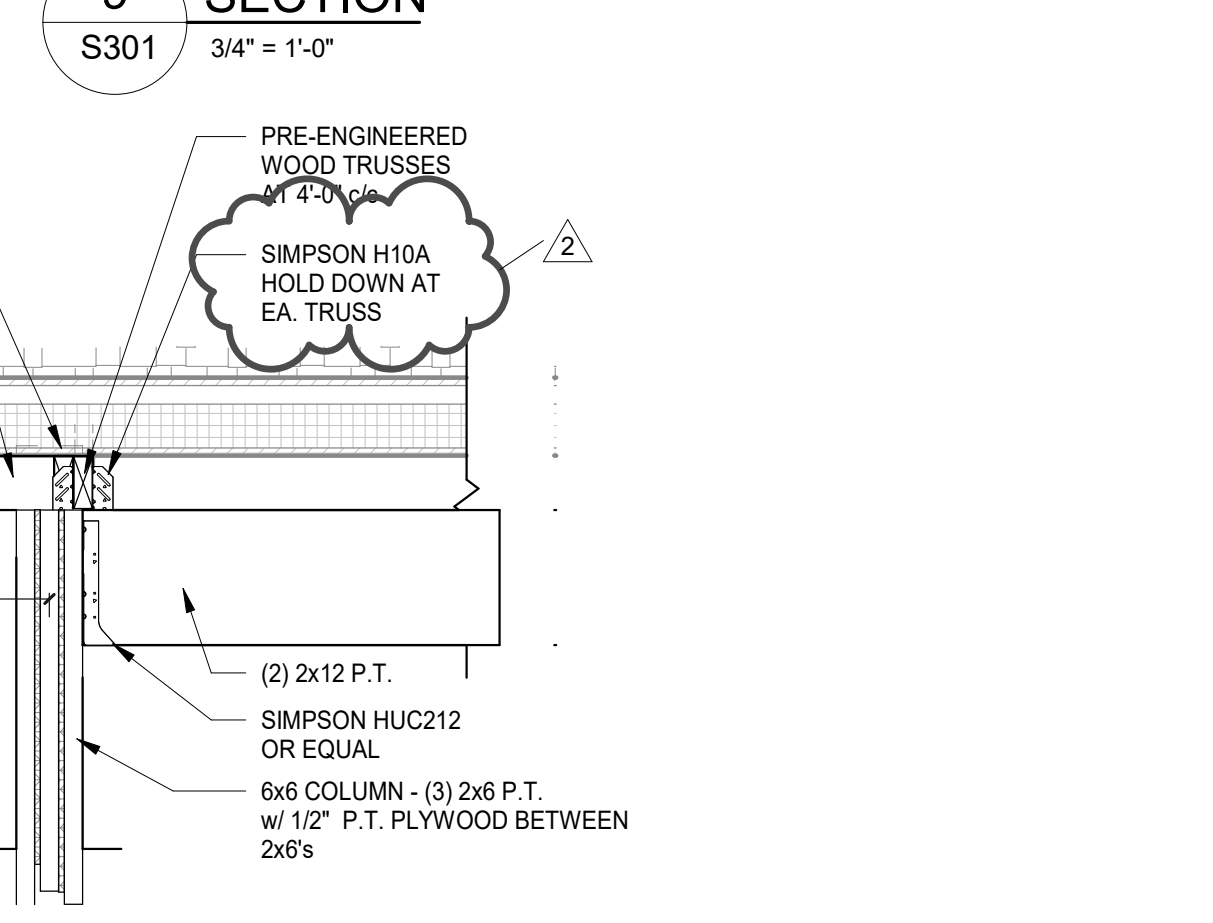
**11 SECTION**  
S301 3/4" = 1'-0"



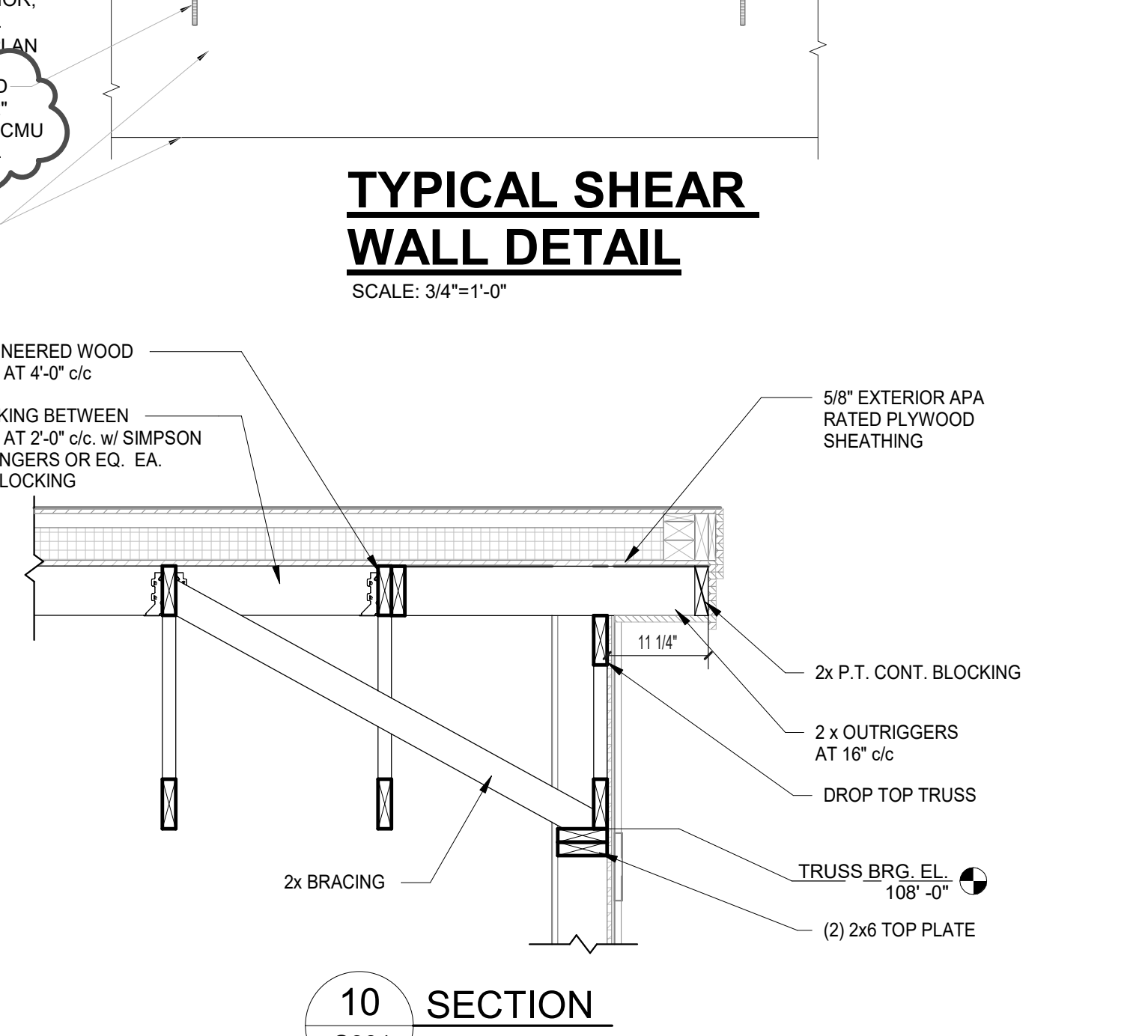
**12 SECTION**  
S301 3/4" = 1'-0"



**13 SECTION**  
S301 3/4" = 1'-0"



**14 SECTION**  
S301 3/4" = 1'-0"



**TYPICAL SHEAR WALL DETAIL**  
SCALE: 3/4" = 1' - 0"



COPYRIGHT  
STEVEN HAMMOND PAUL, INC.  
ALL RIGHTS RESERVED

**SHP**  
312 PLUM STREET, SUITE 700  
CINCINNATI, OH 45202 - 513.381.2112

**NKCAC**  
**FALMOUTH HEAD START CENTER**  
KLEE WAY, FALMOUTH, KY 41040  
**NORTHERN KENTUCKY COMMUNITY ACTION COMMISSION**  
717 MADISON AVENUE, COVINGTON, KY 41011

**ISSUANCES**

05-03-24	DESIGN DEVELOPMENT
05-14-25	PERMIT AND BID SET
2 06-05-25	ADDENDUM 2

**SECTIONS AND DETAILS**

COMM NO. 2023108.01

**S301**